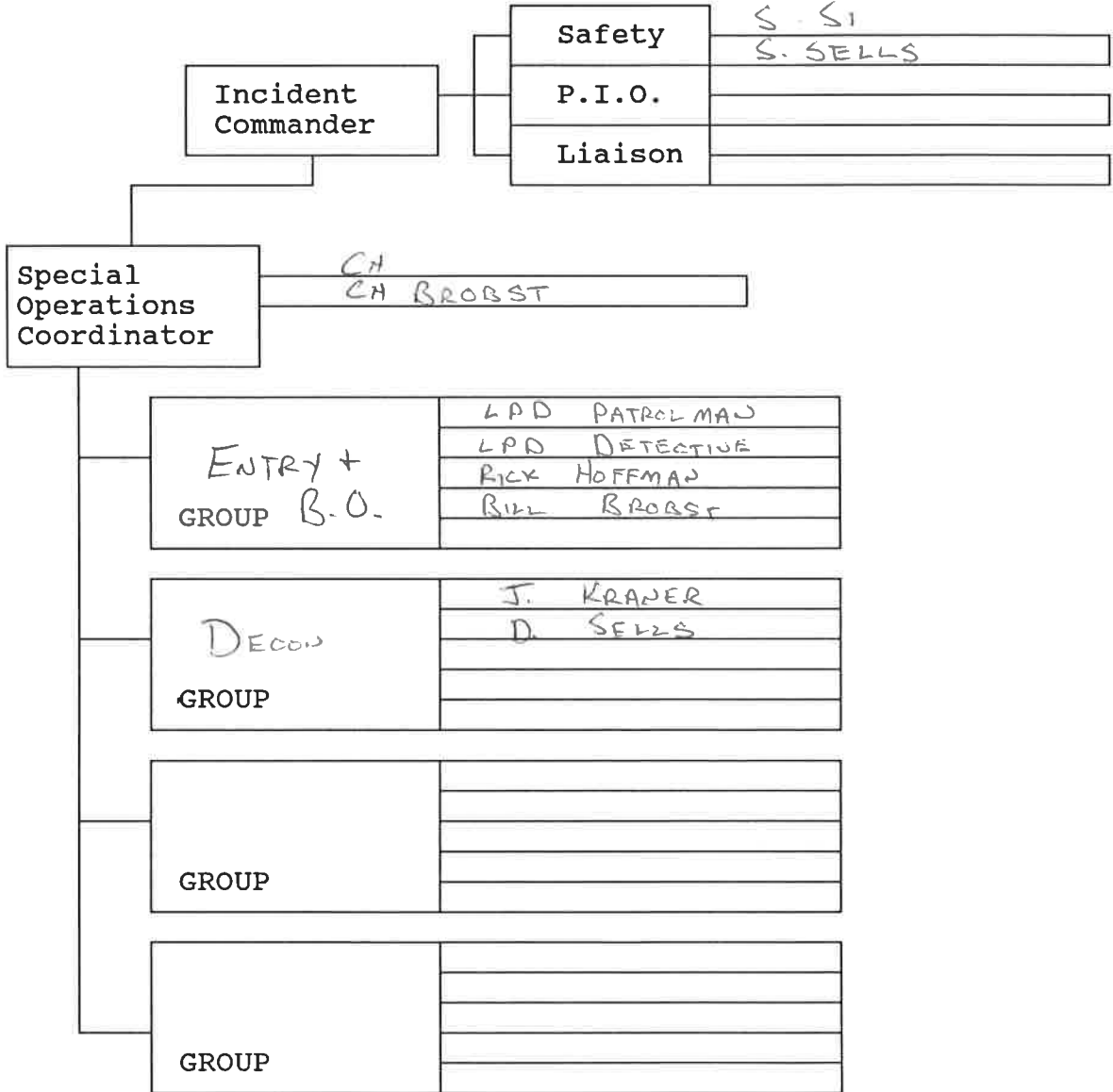


FAIRFIELD COUNTY SPECIAL OPERATIONS TEAM

Incident Command Sheet

Incident Commander ASST. CH. F.D. LPD



Fairfield County Special Operations Team

Tender/Timer Checklist Level "B"

Dressing Tarp	Stools	EMS gloves
1 Hr SCBAs	Duct tape	Poly boots
Chemical Boots	Level "B" suits	Tyvek suits
Radios	personal effects bag	Chemical gloves

CHECK LIST

- Suit and glove compatibility checked with lead tender
- Medical evaluations performed
- Personal effects removed and secured
- Tyvek suit partially donned, Poly boots donned and taped
- Level "B" suit partially donned, Chemical boots donned
- EMS gloves donned
- Finish donning Tyvek suit
- ~~2nd pair of EMS gloves donned and taped~~ NITRIZE GLOVES
- Finish donning level "B" suit
- ~~Silver shield gloves donned and taped~~
- ~~Chemical gloves donned~~
- SCBA donned without mask, cylinder valve on
- Record cylinder psi and determine worktime with lead tender
- Radio secured and on proper channel channel LFD
- Review emergency procedures, and monitoring guidelines
- Review Decon procedures
- confirm that decon is set-up ON THE FLY
- Review action plan with command
- Don facepiece, put hoods up, don helmet and/or ear protection if needed
- Turn on air for entry team, hook up facepiece, record time, visually inspect suit and evaluate personnel

AT APPROX 2200 HRS 5-11-95 Briefed By
Steve Sells

Called Steve

Gave me LPD # to talk to Bruce

Various phone calls + discussion

@ 2300 Left Station 2 in route LPD

Witnessed Accident Memorial Drive + McDonalds

Arrive LPD @ 2330

Briefed

Made Decision's

Took Truck to Station 3 w / myself

Asst Chief Krauer, Capt. Hoffman, Dan Sells,

2 LPD personnel, Health Dept personnel

picked up trailer

Drove to site on ——— Street

①

Dressed 6 people in Level "B"

2 LPD PERSONNEL } ENTRY
HOFFMAN +
MYSELF } BACKUP

KRAWER } Decon
D. SELLS }

Decon To Be WASH / CHLOROXY DILUTED

RINSE / WATER FROM FIRE TRUCK

IN POOLIE TO CONTAIN RINOFF

EMERGENCY Decon FLUSH WITH WATER

AT @ ~~100 HRS~~

LONG WALK

ENTRY BY 2

100 HRS WE WERE READY TO
BELIEVE CAPT OR LT ON LPD
STATED TIME

OFFICERS WENT WELL

WE APPROACHED

MY WALKIE STUCK OPEN

VIALS WERE IN CAR.

EQUIPMENT USED

FINALLY WENT INSIDE
MANY VIALS + EXPERIMENTS

MANY DOGS BAD OPOR

WENT OUTSIDE APPRISED LPD

FINALLY REMOVED VIALS FROM LOCKED

GLOVE COMPARTMENT PUT INTO

DECON BAG ~~BACK~~ TAPPED BAG + CUT OFF EXTRA

CONTAINER ORIGINAL CONDITION + STILL SEALED

AFTER MUCH DISCUSSION ON PRO'S + CON'S

DECIDED NOT TO OPEN CONTAINER

BACK IN SERVICE / DROPPED OFF TRAILER HOME

BT @ 0430

ON BACK

③

6 LEVEL B SUIT PACKS
6 TRUCKS DESTROYED
1 BARRICADE DESTROYED

2 Decon BAGS

1 SCBA 5 MIN